

Fronds

Newsletter of the Friends of the Australian National Botanic Gardens
Number 69 December 2011



Inside:
Your free ANBG
bird brochure
and comment on Draft
Gardens' Management Plan
page 13



Patron His Excellency Mr Michael Bryce AM AE
 Vice Patron Mrs Marlena Jeffery
 President David Coutts
 Vice President Barbara Podger
 Secretary John Connolly
 Treasurer Marion Jones
 Public Officer David Coutts
 General Committee Dennis Ayliffe
 Anne Campbell
 Lesley Jackman
 Andy Rawlinson
 Warwick Wright

Membership Secretary Barbara Scott
 Activities Convenor Lesley Jackman
 Fronds Committee Margaret Clarke
 Barbara Podger
 Anne Rawson

Growing Friends Kath Holtzapffel
 Botanical Art Groups Helen Hinton
 Photographic Group Lesley Jackman

Exec. Director, ANBG Dr Judy West

Post: Friends of ANBG, GPO Box 1777
 Canberra ACT 2601 Australia

Telephone: (02) 6250 9548 (messages)

Internet: www.friendsanbg.org.au

Email addresses:

info@friendsanbg.org.au

membership@friendsanbg.org.au

newsletter@friendsanbg.org.au

The Friends newsletter, *Fronds*, is published three times a year. We welcome your articles for inclusion in the next issue. Material should be forwarded to the *Fronds* Committee by 1 February for the April issue; 1 June for the August issue; 1 October for the December issue.

Email or post material to the *Fronds* Committee at the above addresses or, place in the Friends letterbox, located inside the Gardens' Visitor Centre, between 9.30am and 4.30pm, Monday to Sunday. Editorial messages: telephone (02) 6250 9548.

Design and layout: Anne Rawson

Printing: Union Offset Printers

Printed on recycled paper

ISSN 1036 9163

Cover: Satin Bowerbirds. Detail from the painting by Frances McMahon which was painted for the Friends' brochure 'Birds of the Australian National Botanic Gardens'.

Launch of bird brochure



Frances McMahon with Friends' Patron, His Excellency Mr Michael Bryce, and some of her paintings. Photo by Barbara Podger.

'We were greatly honoured that His Excellency Michael Bryce, AM AE agreed to become the Patron of the Friends from 28 May. We have had a long association with Government House that has been very positive for the Friends and the Gardens. Mr Bryce's first official duty as Patron took place just before this AGM when he launched the most impressive brochure on the birds of the gardens. I hope you will agree that it is a marvellous addition to the information available to visitors to the Gardens. Our sincere thanks to Louise Muir and Jenny Bounds for managing this project and particularly to the artist, Frances McMahon, for her wonderful work.'

From David Coutts President's report at the Friends' AGM.

IN THIS ISSUE

| | |
|---|----|
| Launch of bird brochure..... | 2 |
| Breakfasting with birds | 3 |
| A packed nine months. AGM reports | 4 |
| Botanical Art Groups..... | 6 |
| Red Centre Garden | 6 |
| New works set in stone in the Sydney Basin..... | 7 |
| Saving <i>Eucalyptus imlayensis</i> | 8 |
| From the Bookshop | 9 |
| The year of bush tucker..... | 10 |
| The tastes of Australia garden..... | 10 |
| Bush tucker from Growing Friends | 11 |
| Schools Photo Competition | 12 |
| Garden Shorts | 13 |
| Friends Briefs | 14 |
| What's on at the Gardens..... | 17 |
| Twilight dinner..... | 20 |

Breakfasting with birds

Mary Lovett

The spring series of Breakfast with the Birds walks through the Botanic Gardens is a rare opportunity to experience the delights of the gardens early in the morning. Your bird guide has spent many hours patrolling the pathways for 'likely spots' to see which birds are nesting.

As a bird walk guide you are a little apprehensive when greeting the guests – will the birds cooperate this morning?

Our first walk this spring started in steady rain—even the Australian Wood Ducks were sitting high up in the branches of the eucalypt trees—was this an omen?



We got off to a good start with a pair of Red Wattlebirds feeding young in full view. White-browed Scrubwrens and the Superb Fairy-wrens were going about their business hunting for grubs amongst the ground litter. The Eastern Spinebills chased one another in a frantic aerobic display while the Crimson Rosellas flew around to be sure they were noticed. Australian King Parrots then flew by in a stately manner.



The male Satin Bowerbird sitting; and working in his bower; Red-browed Finches on the grass; and a Gang-gang and his partner going home. Photos by Mary Lovett.

The great advantage of these early morning walks is that we have the gardens to ourselves and have the opportunity to see the Honeyeaters—Yellow-faced, White-naped and the resident New Hollands—checking for the early morning nectar. The White-winged Choughs had once again renovated their nest and were raising a brood collectively.



We also saw a flock of Red-browed Finches feeding while the creaky door noise indicated that Gang-gangs were in the area. The Kookaburras were not at home in their hollow, however the high-light for the group was seeing the male Satin Bowerbird arranging his blue prizes outside his bower, ensuring they were just so. Canberra is home territory to Satin Bowerbirds but it is not often you can observe the male tending his area at such close quarters.

We had a tally of some 20 to 25 bird species. It was now time to adjourn to the cafe for a delicious breakfast and to compare notes on what was the best bird sighting and who had the clearest photo.

As usual the bird walk was a very enjoyable start to the day.



A packed nine months

Following are edited versions of the reports to the 23rd AGM of the Friends on 3 November 2011 by David Coutts, President of the Friends; Marion Jones, Treasurer; Dr Judy West, Executive Director ANBG; and Guest Speaker Mark Tucker.

President's Report

The Friends of ANBG is a special group that I feel plays an important role at this vital national institution. I understand that we are one of the largest Friends groups at any Australian Botanic Gardens. We are a totally voluntary group and the money we raise and our in-kind contributions go almost totally to support the Gardens. I am proud of what we have achieved in the past nine months.

This AGM is the second in 2011, which is a bit unusual. However it became necessary following a change to our constitution which was necessary to bring the financial years of the Friends and the Public Fund into line, as required by the Office of Regulatory Services. I hope we can return to one General Meeting per year in the future.

We were greatly honoured that His Excellency Mr Michael Bryce AM AE agreed to become the Patron of the Friends from 28 May. I want to thank Mrs Marlena Jeffery for her support while she was Patron and am very happy that she has agreed to stay involved as the Vice Patron.



Barbara Podger shivering at Floriade. Photo by Ann Anlezark.

We cooperated with the Gardens to mount the display at Floriade and the Guides provided their wattle walks and additional walks through the Floriade period. Breakfast with the Birds was also on during Floriade and was very popular as always.

The 4th Botanical Art Exhibition, with over 100 entries, and the 15th Friends Schools Photographic Competition, with even more entries than last year, were both successful. The photo competition is one way we can engage young people, but we want to explore additional ways of doing this.

The Growing Friends have continued their excellent contribution to the gardens, with spring and autumn plant sales. The Botanical Resource Centre was supported by a dedicated band of explainers and broadened its activities during the year with monthly talks by experts on various aspects of taxonomy and related subjects.

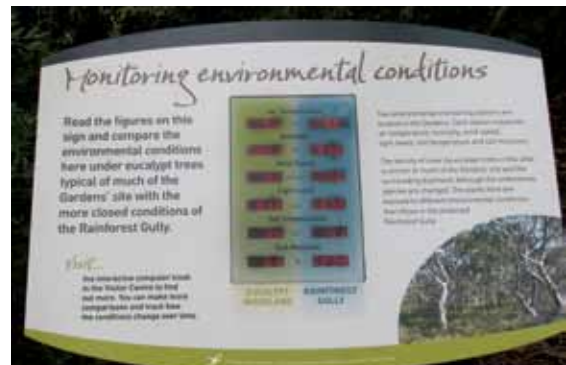


Acacia melanoxylon seed pods by a member of the Photographic Group.

During the year the Friends established a photographic group, which commenced in April this year. Like all new ventures it has taken a little while to find its feet but I am very hopeful that it will become a firm part of what the Friends can offer at the Gardens.

The launch of the impressive bird brochure is a marvellous addition to the information available to visitors to the Gardens. The Thursday talks program has continued to be a major draw card for the Gardens. A website review and revamp is underway and we hope to see the results early in 2012. Our newsletter, *FronDS*, continues to set a high standard.

Our Public Fund, which provides a tax deductible opportunity to give money to the Gardens, was particularly



The Environment Monitoring Station in the Eucalypt woodland. Photo by Anne Rawson.

active in 2011 with spending on Gardens' projects of \$49,000. In March the lichen website was launched, followed in May by the launch of the Environmental Monitoring Stations. The balance in the Fund at the end of the financial year was \$39,116.

The Project Committee has approved in principle a number of projects that are well advanced, including a set of reusable banners for the Friends, a people mover for the Gardens, lighting in the rainforest gully and a Eucalypt Discovery walk. We will make our final contribution of \$22,000 to the alpine project shortly.

Looking ahead a key challenge will be working with the Gardens to achieve the priorities identified in the new Management Plan. Our relationship with Gardens' management and staff is excellent at the moment and to build on this we want to see the establishment of an advisory body, to give some wider input into decision-making, especially as the elements of the new Plan are addressed.

One of the problems with a report like this is that one can't name all those who have contributed to the success of the Friends; I can only most sincerely thank everyone. This job of President is only possible with the active support of so many people. That is especially true of the Council members, all of whom have taken on specific responsibilities, and those who convene the various groups. Thank you all.

David Coutts

Treasurer's Report

For the nine months to 30 June 2011

It's hard to compare nine months with a full year's financial activity, but the accounts presented by Treasurer Marion Jones indicated the Friends are maintaining a healthy balance sheet. The accumulated surplus at the end of the financial year was \$366,905. This is slightly down on the previous year, largely reflecting increased expenditure on projects for the Gardens.

Executive Director's Report: Dr Judy West

Waratahs blooming for the first time in the entrance to the Sydney Region gully, a gold medal winning garden at Floriade and planning well underway for a spectacular Red Centre Garden to open in Canberra's centenary year; all beautiful indicators of a productive year at the ANBG. Judy West took us through these and other perhaps less visually appealing, but still important, outcomes for the year. The new Management Plan will provide the guiding principles for the Gardens and an MOU with the Friends will steer its relationship with the many and varied Friends' activities in the years ahead.



Waratahs blooming at the entrance to the Sydney Basin. © ANBG.

Judy stressed the importance of partnerships to the Gardens many research projects. A new 10 year agreement with the CSIRO confirms their role in the Centre for Australian National Biodiversity Research. The Australian Seed Bank Partnership is an example of a national partnering role while cooperation at the local level is helping conserve a number of threatened species in the ACT, including *Swainsona recta*, three orchids and a brassica.

Visitors to the Gardens (and there were over 450,000 of them in 2011) will find plant identification easier too with over 3,000 more labels on plants. A people mover now on trial should make it easier for visitors to enjoy even the remotest areas of the Gardens.

With an updated science and conservation policy to come, the Gardens has set itself the goal of seed banking every ACT plant species and to either seed bank or conserve *in situ* every listed rare and endangered species in Australia. We look forward to many successful conservation stories ahead.

Guest Speaker: Mr Mark Tucker

Deputy Secretary, Department of Sustainability, Environment, Water, Population and Communities

How can an organisation the size of the ANBG stand out from the crowd in a Department with such a mammoth name and even more complex responsibilities? Being relevant to the priorities and big ticket items is one good avenue according to Mark Tucker. With the Department firmly focused on a major program to return biodiversity to the landscape there are opportunities for the Gardens to play an important part contributing to revegetation projects through seed banking and expertise with seed germination and plant propagation. Forging partnerships is another way to position the Gardens in a pivotal role, as was demonstrated by the ANBG's leadership in the search for solutions to the Myrtle Rust outbreak.

Our thanks to Mark for a thought-provoking presentation.

Botanical Art Groups

Gillian Bellas

Planning is well under way for the 5th Annual Exhibition of the Botanical Art Groups (BAGs). Members have been busy drawing and painting at our monthly meetings in the Gardens, working towards a collection of art works that aim to demonstrate the beauty, uniqueness and diversity of Australia's rich native flora.

Meanwhile the exhibition committee has been working closely with the Friends Council and ANBG staff to look at how we can tie the exhibition in with other promotional activities being planned for 2012.

We recently made the second most important decision we have to make each year. We selected the art work that will form the basis for all our promotional material for the 2012 Exhibition. The artist is Marjorie Roche and the art work a beautiful portrayal of *Grevillea rhyolitica* 'Deua'. Marjorie is a regular member of the BAGs and has been painting for many years although it has only been in the last couple of years that she has discovered the joy of botanical art. Congratulations Marjorie.



Photo by Cheryl Hodges

G. rhyolitica is native to the Deua National Park in New South Wales and has become a popular if somewhat temperamental plant in domestic gardens. There is a beautiful specimen of *G. rhyolitica* sp *rhyolitica* 'Deua Flame' in the bed just across from the Friends Lounge in the Gardens.

Look out for this lovely image in our exhibition promotional material over the coming months.

And the most important decision the BAG Committee has made regarding the 2012 Exhibition? The date! **12 April–13 May 2012.**

Red Centre Garden

Kaiya Browning

As you have all probably noticed there have been some significant preparation works done at the Red Centre Garden site in readiness for the site's development.

As a result of the site's water intake and drainage issues (thanks to the gully that drains directly onto and through the site) our first point of construction will be to undertake major drainage works that will see that water influx channelled under the site and out through an existing pipeline in the Sydney Basin Gully (SBG), this is a massive undertaking which involves boring from the RCG site to connect to existing pipes in the SBG. The tender for these works is currently being advertised and construction will commence in January 2012.

Next steps involve developing final design details and plans for the site, which we can now commence, as we have been able to develop a thorough costing of the project as a result of a generous funding commitment from Peter Cochrane, Director of Parks Australia, for the 2012-13 period.

The Horticultural and design groups have been developing species lists and sourcing materials in preparation for the landscape planning and significant progress has been made. The next 12 months will see a viewing platform installed, path networks constructed and the development of the 'landscape themes'. These are exciting times for the ANBG. Watch this space!



Driving towards the 'Olgas' (now Kata Tjuta) in 1985. Photo by Howard Rawson.

Interpreting the Red Centre

On 17 October there was a Stakeholder Interpretation Workshop at which three Friends were present, as were representatives from the National Museum and the ANU, which introduced an interesting non-plant point-of-view. There was discussion of ways to tell the stories of the place, the Aborigines and the animals as well as the plants, all of which will be brought together for further comment. Watch this space too!

Anne Rawson

New works set in stone at the Sydney Basin

Dan Marges, Anthony Buykx, Dave Taylor and Sabrina Sonntag

Photo by David Webster

Living Collections staff have pulled together another magical transformation as part of stage 2 of renovations to the entrances of the Sydney Basin along the main path. And it's only the beginning!

The visitor experience

For the new entrance we wanted visitors to readily identify that they were walking into 'sandstone country', featuring of course the plants from that country...from the typical and memorable to the unusual, the rare, the delicate and subtle. This coming together of the materials, plants, stories and structure will continue to play out as the garden develops and grows.

The materials and how they went together

Much thought, discussion and planning and arm waving went into considering the way the structural elements went together for this area. Key design components were the sandstone blocks, rocks, growing media and surface.

Sandstone blocks were used to suggest an 'escarpment', the connection to country being the many memorable natural areas throughout the Sydney Basin itself, for example the Blue Mountains west of Sydney. This structure provided the wall for which a good depth of sandstone media could be used as backfill.

This had three obvious benefits: it provided excellent drainage and depth of natural sandstone, ideal for growing those often challenging sandstone icons such as *Boronia*, *Telopea*, *Actinotus* and *Dampiera*, as well as some of the lesser known species. It also provided a platform and level change to lead the eye to the area and the plants growing above the escarpment. The rocks also provided a cool root run where plants could find their feet or preferred niche.

The sandstone used has a story of its own. Being recycled from a quarry at Bundanoon, some of the large blocks date back to the late 1800s! Another aspect was to consider the potential for water harvesting and this played out as an innovative redirection of drainage water from the road back into the garden - lined with sandstone flagging from the same quarry further tying the materials together. Our resident 'stone masonry artisan' Anthony Buykx worked with Dan Marges to ensure a high quality

and seamless quality transition from sandstone lined guttering to creek bed and ephemeral waterfall.

The Improvisation

A chance discovery (part way through the excavation of the area) revealed an old path in the lower section of the gully. This became a talking point about visitor access and after looking at this area from many angles we saw this as the perfect opportunity to create access to a partly secluded space nestled down near the creek. Using sandstone blocks as informal and natural looking seating in this new space was the perfect option to enable people to pause 'in' the garden.

The collaborative collecting and fieldwork

Another aspect of this project has been field collecting forays to sandstone areas in the region to furnish the garden with an exciting and engaging new lot of sandstone flora.

We have partnered with threatened species officers from NSW Government, Booderee Botanic Gardens and Eurobodalla Regional Botanic Gardens to target a range of new introductions for the collection and wild sourced collections of more typical species.

This follows earlier collections of sandstone flora over the past 12 months. Cuttings of *Telopea speciosissima* from the Mittagong area cleverly struck (a feat in itself) at our nursery have been planted in the stage 1 works. More are being grown on for planting in this area.

So although the garden construction has been largely completed, the garden is really just beginning.



Photo by Murray Fagg



Saving *Eucalyptus imlayensis* An Endangered Species Population Enhancement Project

Paul Carmen - Horticultural Collections Records Manager

Only 70 trees remain in the wild of the endangered *Eucalyptus imlayensis*, a multi-trunked mallee which grows up to eight metres high. All are situated at the top of the very steep Mt Imlay at 900 metres above sea level (south of Eden NSW).

Over the past ten years there has been a gradual decline in the population with very limited signs of seedling recruitment. However, the main threat to the population has been identified as the cinnamon fungus, *Phytophthora cinnamomi*. Considering only a small number of individuals remain, and all from a single isolated population, there appears to be a high risk of extinction unless something is done to reverse the decline in numbers.

Since 2007, I have been coordinating the ANBG's contribution to the Recovery Action Plan for *E. imlayensis* with Keith McDougall of the New South Wales Office of Environment and Heritage and the NPWS South Coast Ranger, Lyn Evans.

During this time, a number of trips have been made to Mt Imlay to assess the population and collect seed. One of the problems with this species is the lack of viable seed, that is very few seed capsules are produced, which contain even smaller amounts of viable seed. As with most eucalypts, the seed capsules are usually high in the canopy, creating challenges for seed collection.

Fortunately some seed has been collected by ANBG staff. Many methods have been trialled to achieve this. Having David Taylor stand on my shoulders yielded a handful of collected seed, but happily this method has now been replaced by a specialised three metre long extendable pruner. Suffice to say that staff have had to use a certain amount of ingenuity (binoculars, rock climbing skills etc) to collect the seed.

The good news is that the seed that has been collected has germinated readily and a small number of additional

plants have been grown which has made it possible for the ANBG to make some significant contributions to the recovery plan. We have sent plants to the Sydney Plant Pathology Laboratory to test for susceptibility to *P. cinnamomi* and the information gathered from this scientific testing is expected to help formulate strategies for limiting the spread of the disease.

In May 2010, I was accompanied by staff members Laura Schweickle and Rosella Uwedo-Hampshire for the long climb up the mountain. Seed was collected from three trees on this occasion and a total of 23 trees were grown from the seed. Having so many plants available meant that there was now a possibility of attempting to rejuvenate the population on Mt Imlay and so began planning an enhancement planting.

The main purpose of enhancement planting is to find out whether plants of *E. imlayensis* could be established in other sites on the mountain and if these younger more vigorous trees may in time produce better quality seed and therefore extend the population.

By August 2011, plans were well under way with funding approved under the NPWS 'Find it, Fix it' Program. The major challenge was how to get materials, tools and especially water to the top of the mountain. It certainly wasn't going to be possible to haul it all up by hand!

NPWS Ranger Lyn Evans, had arranged for a helicopter to come from Jindabyne but it would need perfect conditions to operate. With the late winter southerly fronts arriving every second day, it was looking very difficult indeed. By early September, things were getting desperate so Lyn and I got together and looked at all the weather maps and reports for the following week and decided that the next morning was the only possible time.

Thankfully all went well and by 11 am the crucial 320 litres of water along with digging tools had been delivered.

Additionally a remote hygiene treatment station was delivered for the purpose of cleaning people's boots including two seats and boot cleaning brushes. Hauling water over uneven and rocky ground is tricky and difficult at the best of times so it was important to have the water delivered as close to the planting areas as possible. Why so much? In the event that it turns out to be a hot and dry summer it is important to have the capacity to carry out supplementary watering to ensure that the trees establish well.

In September, with the help of a group of eight volunteers, including members of the Southeast Region of the Australian Native Plants Society, we planted 20 trees in various locations at the top of Mount Imlay. The planting went well and soil was easier to dig and more moist than anticipated—perhaps the five millimetres of rain the day before helped a bit.

Fortunately members of the Friends of the ANBG do not need to make the long and difficult climb to see the *E. imlayensis* trees because as a result of the Gardens *ex situ* conservation strategy, there are now plants of this species growing in the endangered species beds near the Visitor Centre.

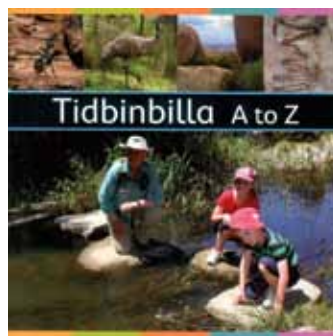
On a very positive note Ranger Lyn Evans reports that all the new Mt Imlay trees are growing well with strong new growth!



Opposite page: Anthony Buyx and Dan Marges (ANBG Horticulturalists) setting off. Above: Paul Carmen and volunteers at base of cliff. Photos by Laura Schweickle.

From the Bookshop

with Tom Butt, Shop Manager



Tidbinbilla A to Z
developed by Volunteer
Interpreters
Paperback, colour
photographs
ISBN: 978-0-9807857-1-5
RRP: \$10.00

Initiated by Tidbinbilla Volunteer Interpreters, with support from the ACT Government.

Tidbinbilla – derived from the aboriginal word meaning ‘where boys become men’.

This is a gorgeous illustrated book that takes you on an alphabetical journey through the beautiful valley. Starting from the tiny Ants to the Zizag tree marks formed from moth larvae.

It is a delightful educational resource that can be used to teach the very young and yet be enjoyed by all.



*Orchid species of the
Shoalhaven, NSW Australia*
by Alan W. Stephenson
presOz, 2011
Paperback (A5), 54pp, colour
photographs throughout
ISBN: 978-0-9581679-8
RRP: \$20.00

This book is the first attempt to document all indigenous orchid species in the Shoalhaven Region. It has been produced because of the increasing need to determine exactly which orchid species occur as much for conservation purposes as for our personal curiosity.

The alphabetical listing of all species is followed by examples of unusual forms, colour variations and unnamed species. Contents include general descriptions of orchids, their habitats and structure, followed by the species list with images of each, unusual forms, and more information on conservation and fire resilience.

It is a wonderful guide that would be of interest to any orchid or native flora lover throughout the Shoalhaven District.

The year of bush tucker

Jane Keogh

2011 has been the volunteer guides' Year of Bush Tucker. This started early in 2011 when the guides were asked to develop bush tucker walks for about ninety people attending the 18th Symposium of Australian Gastronomy in May. A large number of guides were involved in researching the locality of bush tucker plants at the ANBG and their culinary uses, both indigenous and contemporary. May was the ideal time for a bush tucker walk, with the Lilly Pillys (*Syzygium australe*) covered with extravagant purple fruit and Bunya nuts lying under the Bunya Pine (*Araucaria bidwillii*) in the rainforest. The gastronomers were a delightful group of visitors and we trust that they enjoyed our Gardens as much as we enjoyed their company.

The spin-off from the May walks was that the guides were well positioned to take advantage of Floriade's theme for 2011, 'A Feast for the Senses'. Tuckertime walks were scheduled for every Saturday and Sunday for the duration of Floriade and were particularly popular with families.

The ANBG's award-winning site at Floriade was manned during the week by Friends, most of whom were guides, with a good basic knowledge of the bush tucker plants on the site. The most intriguing of the objects on display were undoubtedly the Aboriginal artefacts for grinding wattle seed and the knock-out (literally) Bunya Pine cone. The large walnut-sized seeds of the Bunya Pine were a prized source of food for the Aboriginal tribes in SE Queensland.



Araucaria bidwillii, Bunya Pine (Photo by D.Greig); Cone (photo by Ranger Troy Dare).

Canberra gardeners, who are interested in having their own bush tucker garden, could consider starting with Midgen Berries (*Austromyrtus dulcis*). This is a favourite bush food for Aboriginal children and is becoming increasingly popular in modern Australian cuisine. See 'Bush tucker from Growing Friends'.

The Mountain Pepper (*Tasmannia lanceolata*) was of interest to all the visitors who were on bush tucker walks. The dried berries,

which look just like peppercorns, have a spicier flavour and an unexpectedly strong delayed 'bite'. The leaves are also used, dried and crushed, as a spice in Australian native cuisine. The tall shrub has dark green leaves and distinctive crimson stems and grows to five metres.



Tasmannia lanceolata. Photo by Murray Fagg. Peppers and leaf from the web.

For those of you who were not able to go on any of the bush tucker walks, or visit the ANBG's Floriade site, all is not lost. Horticulturalist Rosella Hampshire is developing a bush tucker garden, appropriately sited next to the café, where you will be able to see some of the plants mentioned above as well as some other familiar Australian bush tucker plants.

The Tastes of Au

The Gardens chose 'Food and Flavours of the Australian Bush' as the theme of their showcase garden at Floriade, tying in nicely with the overall 'Feast for the Senses' theme. A gorgeous display of Australian native plants in all their flavoursome glory was complemented by other sensual delights to create a 'feast for all the senses'.



Photo by Sybil Free

Bush tucker from Growing Friends

Yvonne Robinson

Austromyrtus dulcis

Photo by Murray Fagg



One of the plants we hope to have in next year's Autumn sale is *Austromyrtus dulcis*, a recognised bush tucker plant. Known as Midgen Berry, it is a sweet and very tasty bush food. It is a spreading shrub with glossy dark green leaves. The white berries are covered in small blue-black spots, giving them a mauvish appearance, and containing three to nine pale brown seeds. The flowers have white ovate petals and are usually borne in clusters of 2-5 flowers. The flowering time is summer to mid-autumn. The species has been performing well in cultivation at the ANBG on the margins of the rainforest gully. Requirements are an assured moisture level and some overhead tree shelter in areas of severe frosts. Our plants have been potted on and if not available in April, will be ready next spring.

Acacia 'Gold Lace'



Photo by Murray Fagg

We have finally been successful in striking some cuttings; perhaps the result of last year's good season and better cutting material. Paul Carmen suggests that these species are difficult to grow from cuttings; the main problem is cutting leaf drop. Cuttings need to retain their leaves for at least three to four weeks for roots to develop. It has been well worth the effort because *Acacia* 'Gold Lace' is the much admired prostrate and cascading acacia on the wall in the south car park.

Feel welcome to join our meetings and propagation sessions on the first Saturday of each month at 9.00 am during spring and summer in the Joseph Banks Building. Working bees are on the third Tuesday of each month.

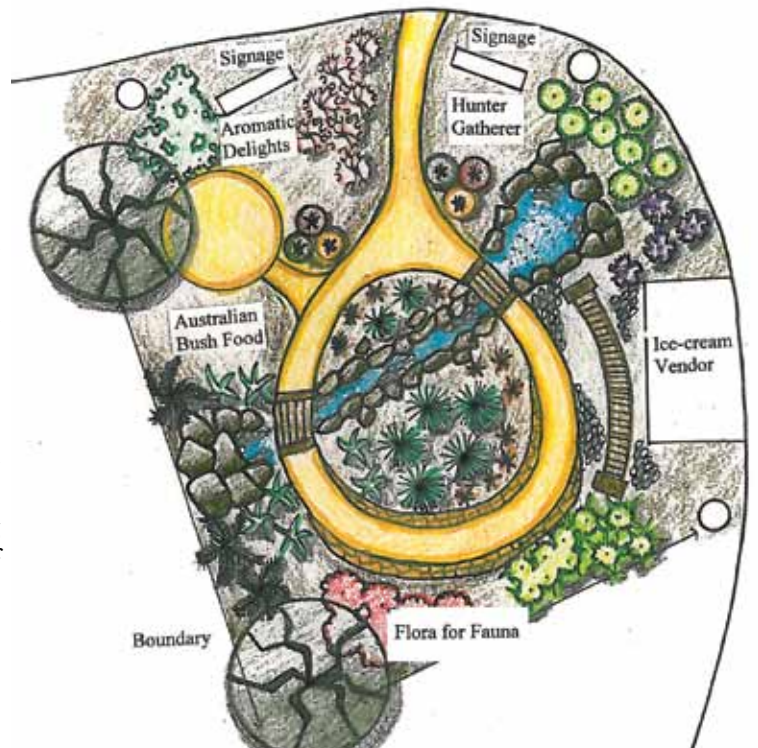
Australia Garden

The display featured Australian bush foods, aromatic delights and a Food for Flora display.

The Garden was designed to entice the visitor in and around each individual display and past our information and 'touch table'. Here they were encouraged to get up close and personal with some of the vegetative material from the display with helpful advice from staff and volunteer guides.

Visitors were both soothed by our beautiful trickling water feature and impressed by our striking display of flowering natives, including Gynea Lily, Chef's Cap Correa, Lemon Myrtle and the iconic Waratah. The Floriade judges were clearly impressed too, awarding it the display garden gold medal.

Congratulations to designer Kaiya Browning and all ANBG staff and volunteers who made it such a winning event. (See Garden shorts)



Drawn By: Kaiya Browning 23/06/2011



'Kangaroo paw' Margaret Palazzo, Canberra High. Highly commended Open Digital/Photographic Effects.



'Into the light' Margaret Palazzo, Canberra High. First Open People in the Gardens.



'Colour of fire' Eloise Bannerman, Canberra High. First High Schools Colour.

'Our Nation's Garden'

15th Annual Schools Photographic Competition

Judged by Dr Denise Ferris, Senior Lecturer, Photography and Media Arts, ANU School of Art.



'Fire in the petals' Harriet Slee, Canberra College. First Colleges Colour. 'The really interesting works here were striking because of their use of subtle and unusual colour. Not just the brightest colour but the most arresting because of its difference made strong visual statements.' Judge's comment on this section.



'See me curl' Rachael Harris, Canberra High. First High Schools Black and White. 'So the thoughtful use of monochrome, however with significant use of tones in the black and white medium, is very important.' Judge's comment on this section.



'Low wonderland' David Mole, Canberra College. First Digital/photographic effects. 'Unusual formats, making strange the plants in the gardens and therefore making us look again with a new eye were achievements here.' Judge's comment on this section.

Garden Shorts



AUSTRALIAN NATIONAL
BOTANIC GARDENS

Draft Management Plan

The Australian National Botanic Gardens (ANBG) have released for public comment our 2011–2021 Draft Management Plan that outlines how we propose to manage and grow our significant botanic garden and national institution for the next ten years.

Highlights of the 2011-2021 management Plan:

- a new vision, mission statement and brand for the ANBG
- strengthened programs in horticultural and conservation research
- focus on conservation programs of national significance such as alpine and grassy woodlands ecosystems
- emphasis on state-of-the-art practices in biodiversity science and information management, horticulture, education and visitor services
- a range of new development opportunities
- expanded education programs
- a range of new promotional activities.

You can view the 2011-2021 Management Plan at www.anbg.gov.au/gardens

Comments on the draft Management Plan must be received by **31 January 2012** and may be emailed to: anbgplan@anbg.gov.au or posted to **Executive Director, ANBG, GPO Box 1777 Canberra ACT 2601.**

Peter Byron

Splendour in the Grassy Woodland

Over 1500 flowering herbs, grasses and forbs have been added to enhance the impact of the Grassy Woodland Garden this spring. The garden showcases plants from several endangered ecological communities around the Australian Capital Territory including Yellow Box / Red Gum grassy woodland, natural temperate grasslands of the ACT region and Snow Gum / Black Sallee sub-alpine woodland.



Curator, Laura Schweickle, spreads seed to boost the display. Photo by Sabrina Sonntag.

Plants thrive in pipes

Plants that can be difficult to grow outside of carefully controlled conditions are being trialled and showcased in special pots made from recycled pipes around the Gardens. The pipes project allows visitors a chance to see plants, many of them threatened species, that are normally hidden away in the protected environment of the nursery.

Staying valuable and viable

That was the theme of the Botanic Gardens Australia New Zealand (BGANZ) congress in Albury, NSW attended by a group of Gardens' staff and Friends (including Warwick Wright) in October. There were international speakers from Honolulu and Botanic Gardens Conservation International and two streams discussing collections management and community and education. It was a great opportunity for all gardens to connect with the up-to-date 'big picture' issues for botanic gardens in conservation and cultural heritage

management and inspire action about global issues. Anne Duncan, ex-Director ANBG, was elected president of BGANZ Council. Next BGANZ Congress is in Dunedin NZ in 2013.

Staff among Gardens' treasures

Peter Cochrane, Director of National Parks, called all staff to a special morning tea to recognise four Gardens' staff members for their extraordinary contributions to the Gardens. Peter (centre) presented awards for outstanding achievement to Kaiya Browning, Frank Brookhouse, David Taylor and Rosella Hampshire.



Photo by Steve Speer

Floriade gold award

David Taylor, Curator Living Collections, Kaiya Browning, Landscape Architect, and Ewan Buckle, Gundaroo Landscaping and Civil, hold the glass prize which says 'Floriade Showcase garden competition 2011 Display garden Gold award'. Congratulations to all those who planned, designed and built the garden.



Photo by Anne Rawson

Gardens Shorts contributed by Sabrina Sonntag

Friends Briefs

Warwick the Wonderful

A tectonic shift is about to occur in the plates underlying the ANBG: Warwick Wright is retiring from running the Gardens' Thursday lunchtime talks program after some seven years in the job. On behalf of all who have enjoyed Warwick (and Pat's) efforts over the years, we would like to say a very warm thank you for this hard work. We wish Warwick and Pat well in their many other roles in the Gardens.

A new committee has been formed to take on this responsibility – Lesley Jackman (convenor), Linda Beveridge, Peter Davidson and John Turnbull. And yes, we think four is about the right number of people to take over from Warwick who, as someone said the other day, has left big shoes to fill. The committee has been developing a program of speakers for February to April 2012, which is published in this issue of *FronDs*. We hope you enjoy it and look forward also to receiving any suggestions you may have for talks.

Lesley Jackman

Seedy Vols

Following a call for volunteers in our last issue, the Seed Bank Manager interviewed, selected and trained a band of 12 volunteers to assist during local seed collecting field trips in the ACT and nearby NSW.

The training day covered the value of seed collecting, optimal conditions for seed storage, field recording and collecting, and pressing herbarium specimens. A practical fieldwork component on Black Mountain gave volunteers an opportunity to practise plant description including recording the plant's location and the topography, vegetation, slope, and soil type, important elements of a field note book.



Photo by Jeanette Jeffery

Seed collecting trips have already started, and are scheduled to continue over the summer months, the peak time for seed production.

Volunteers and staff on the first field trip collected herbarium specimens from over 10 different species on Black Mountain. These specimens were from families Poaceae, Fabaceae, Rhamnaceae, Dilleniaceae and Mimosaceae.

Future trips will collect seed from other Canberra locations as well as further afield. Building a diverse *ex situ* seed collection is important because the ANBG Seed Bank supports the development of the Gardens' living collection, supplies resources for research at the Centre for Australian National Biodiversity Research and other institutions, and contributes to ANBG's role in conservation and as a member of the Australian Seed Bank Partnership.

Life member



Photo by Steve Speer

'The life membership award at this AGM goes to Doreen Wilson. Doreen joined the Friends at the very beginning, in 1990. She remains a guide and regularly takes walks and attends the national guides conferences when she can. She is also one of the earliest members of the Growing Friends and she was also involved with the former craft group which made many special

items using materials from the Gardens. And she has been a volunteer at the seed bank, a vital and growing part of what the Gardens is doing. When I met Doreen in 2002 I came to the view that she must know virtually every plant personally. Doreen has also done many things to help the Friends and the Gardens behind the scenes and not always noticed. I am very happy to call her up to receive this award.'

David Coutts at AGM

Have you renewed your membership?

During October you would have received a reminder if your membership was due for renewal. The Membership Team would like to thank all those who have renewed for their very quick response.

If you have not yet renewed, a reminder will appear on the front of the address page with this mailout. Please renew soon to ensure you receive your new parking pass and membership card before the end of the year. If you have mislaid the form, there is a form on the back of the address page or one can be downloaded from the Friends website at: www.friendsanbg.org.au (select 'Membership'). Please include your membership number or write 'Renewal' on the form.

Gift membership

You can also use this form to give a gift Friends membership – an excellent idea for Christmas! The recipient will receive a package including Membership Card, Parking Permit, the latest *FronDs* and a gift card letting them know of your gift; or the package can be sent to you to be personally presented. Send your gift application to reach us by Monday 12 December to ensure the package is received before Christmas.

Public fund donations

We would also like to thank all those who have generously donated to the Friends through the Public Fund. All these donations are used to support environmental projects in the Gardens.

Bird brochure



Superb Fairy-wrens. Detail from painting by Frances McMahon.

This brochure is the culmination of three years commitment by Jenny Bounds ornithologist and Louise Muir avid bird watcher, who are also both Friends and Volunteer Guides. Work with the artist Frances McMahon over two years has produced this detailed and beautiful brochure. The project managers thank the Friends for funding this brochure, which now forms part of a much needed link between the birds and the gardens.

Remembering Alison



Alison will 'never be forgotten while the wattle blooms'. Anne Joyce.

Group in photo are original Friends, Anne Joyce, Alison McKenzie, David Young and Murray Fagg.

Many of Alison McKenzie's friends at the ANBG were saddened to hear of her death on Thursday 4 August. The bird brochure is dedicated to her memory.

Alison was in the first intake of volunteer guides at the ANBG in 1992 and she continued to provide leadership and support to all guides, taking a major role in their training. She had a remarkable knowledge of Australian plants and the ANBG, and was

totally committed to the Gardens and theFriends.

As a Growing Friend, and a member of the Society for Growing Australian Plants, she was passionate about having a native plant display at Floriade and her hard work saw its inception in 1994. She developed Wattle walks, checked all the birding activity, and got involved in fund raising, special exhibitions, plant sales, seed banking, birthday celebrations etc. In 1996 she was ACT Volunteer of the Year (environment category).

Those who were privileged to know Alison, will remember her for cheerfully imparting her sound knowledge to all, welcoming visitors, and making sure they were well informed of the merits of native plants.

Louise Muir

Murder in the Gardens

What do you get when you put 80 people, six suspects, a dead body and a retired Detective Inspector in the ANBG? —'Death in the Gardens'!

More than 160 people enjoyed two fun-filled evenings early in November. We were lucky to have our own murder mystery show written by Dave Mullan from New Zealand, and brother to our Treasurer, Marion Jones. Dave offered to write a murder mystery for us as a fund raiser, and he and his wife Bev travelled to Canberra to direct the show and play DCI Holmes (Retired) and his lovely wife Watsonia.

The audience had to follow the clues (and there were, many red herrings) to find the murderer. The winning team was the one that identified the murderer and the most correct clues. Some clever video 'news bulletins', a number of bad jokes, wonderful ham acting, and an excellent dessert kept the audience amused, entertained and well fed.

If we can persuade Dave to write another mystery we might do it all again, once the organisers have recovered!

The Friends wish to thank our very good humoured General Manager,

Peter Byron, for agreeing to a dead starring role, Gardens staff and other 'volunteers' who showed off their acting skills as 'suspects', our organisers and behind the scenes helpers, and of course our wonderful DCI (Retired) and his wife.



Dave Mullan (aka DCI (ret) Holmes) in discussion with guests at 'Death in the Gardens'. Photo by Alan Munns.

Guides Conference

Nineteen guides from the ANBG attended the 12th biennial conference of Australasian Volunteer Guides of Botanic Gardens in Brisbane, 12-16 September, with support towards their registration fee provided by the Friends. From plenary sessions to guided walks, we were inspired by exchanges of ideas on community engagement and guiding techniques.

The theme of 'Subtropical Splendour' was demonstrated by our hosts at the Mt Coot-tha and other Brisbane Gardens. Perhaps the walk that inspired the most discussion was the Children's Trail. It featured a number of striking sculptures. The most popular item in the Mt Coot-tha Gardens is an aluminium seat in the shape of a fern leaf which is also a xylophone—it appeals to old as well as young.



Photo by Deborah Hamilton

One pleasing feature of the conference was that the new ANBG guides' shirt attracted a lot of favourable comment.

Don Beer

Friends Briefs cont.

Schools' photo competition

This year's Schools Photographic Competition received 322 entries—our largest number to date! Thanks to all those students and their teachers for the work they put into their entries, and the truly wonderful results. And thanks, also, to the members of the Friends and the ANBG staff who helped with the competition.

All photos were on display in the Exhibition Gallery at the Visitor Centre in November and prizewinners will remain on display for a number of months (possibly in the Dickson Room).

The prizewinning photographs for this competition, together with the prize winners of previous competitions, can also be viewed on the Friends website:

www.friendsanbg.org.au/photocomps.

Shirley McKeown

The Friends' Botanical Art Groups
Annual exhibition

Featuring paintings of
'Bush Tucker' plants

12 April - 13 May 2012, Visitors' Centre

Grevillea rhyolitica 'Deua' - Marjorie Roche

art in the gardens
with friends 2012

Friends' menu at Hudson's Cafe

As previously advised in the Occasional Newsletter, there are changes in the arrangements the Friends have with Hudson's café. Hudson's now provides a special menu for Friends, with discounts on regular prices. That menu is set out below and is also available on the Friends website and on request when ordering at the café (remember to produce your membership card or wear your volunteer badge). The existing system of loyalty cards will be discontinued. No new cards will be issued but existing cards will be honoured until full or the end of 2011.

| | |
|---|-------|
| Toasted cheese & tomato sandwich | 5.00 |
| Toasted ham, cheese and tomato sandwich | 6.00 |
| Sausage roll and chips | 6.80 |
| Meat pie and chips | 8.50 |
| Tempura fish fillet and salad | 10.00 |
| Beetroot risotto with goat's cheese, small | 9.50 |
| Chicken Caesar salad with cos lettuce, bacon, parmesan and Caesar dressing, small | 10.50 |
| Cauliflower cumin fritters with haloumi and sweet lemon dressing | 9.50 |
| Ploughman's Lunch with beef, horseradish cream, cheese, crusty bread, rocket | 10.50 |
| Toasted ham, cheese and tomato sandwich, small cake and coffee/tea | 15.00 |
| Mug of coffee/pot of tea with small cake | 9.00 |
| Mug of coffee/pot of tea | 4.00 |
| Cup of coffee | 3.50 |

No other discounts apply to the above special prices which are applicable to the Friend's member only. The normal Sunday surcharge of 10% and Public Holiday Surcharge of 15% will apply to the above prices.

Books and book stand in memory



Photo by Barbara Podger. The little photo on the right tells you what timbers were used to make the stand.

Guides contributed to purchase books for the Friends Library in memory of former Guide, Meg Richardson, who died last year. A special stand in recycled Australian timbers was crafted by Andy Rawlinson and the books were each inscribed by Mike Johnson.

What's on at the Gardens

December 2011 - April 2012

The Friends of the ANBG thank the many speakers who volunteer their time and talents to further the knowledge of all who attend the events in the Gardens. The Friends use the 'gold' coin donations received at each activity to support Gardens' programs and development. The Friends thank all those who have donated, and all those who will.

Please note: unless otherwise indicated, talks are in the ANBG Theatrette.

Summaries of Power-Point presentations of Thursday talks are available to Friends from the ANBG library. A donation to the Friends for the use of this material will be gratefully accepted.

When bookings are required, phone the Visitor Centre on 02 6250 9540. Members who make bookings for events are requested, as a courtesy to their fellows, to notify the Visitor Centre if they are unable to attend.

Details of events are correct at the time of printing. For changes and updates please check the Friends' website at www.friendsanbg.org.au or on the Gardens' site at: www.anbg.gov.au or in the local press.

DECEMBER

1 December – 2 January International Year of Forests Photographic Exhibition Visitor Centre Gallery

Photographic exhibition by students of CIT celebrating the International Year of Forests. Free.

Saturday, 10 December 5:30pm Carols in the Gardens Eucalypt Lawn

Enjoy Christmas Carols in the Gardens with the ANU Choral Society and the Brazilian Choir. Gold coin donation



*Bush
Magic
Story
Time*

Friday, 2 December 10:00 am Friday, 3 February 10:00 am

Suitable for pre-schoolers. \$2 per child
No booking required.

JANUARY 2012-SUMMER SOUNDS



Relax and enjoy Summer Sounds, Canberra's popular outdoor summer music concert series. Gold coin donation.

| | |
|---------------------|--|
| Saturday 7 January | DeeJay Gospel Band |
| Sunday 8 January | Key Grip |
| Saturday 14 January | As Famous as the Moon, featuring multi Aria winner Bernie McGann |
| Sunday 15 January | The Cashews |
| Saturday 21 January | The Wedded Bliss |
| Sunday 22 January | Annie and the Armadillos (Special Australia Day Concert) |
| Saturday 28 January | *RMC Band (support) followed by Vertical (Feature) |
| Sunday 29 January | ANU School of Music Jazz Trio |

Performance times 6 pm – 7.30 pm. *NOTE: RMC Band begins at 5 pm.

The crowd will be entertained during interval by various dance groups. Food available from Lions or Rotary. Friends will be selling wine and soft drinks.

Volunteers required to assist with wine table, children's table and collecting donations – please email Andy Rawlinson: marawlinson@apex.net.au, or phone Friends office on 6250 9548 (leave message).

Weather check: Concerts will be cancelled on days of total fire ban or severe weather conditions. Check on 6250 9540.

JANUARY

Snakes Alive!

Crosbie Morrison Building
Weekdays, 10:00 am – 4:00 pm
Weekends 10.00 am - 6.00 pm

Live displays of snakes, lizards, turtles, frogs and crocodiles. \$2 child, \$5 adult and \$4 concession

6 January – 25 March
Exhibition: Inner Garden
Visitor Centre

Experience the colour, texture and sound of nature through a multimedia exhibition inspired by Australian native plants, birds, insects and mammals. Free

FEBRUARY

Thursday 2 February at 12:30 pm
'Come into the garden'
Mark Carmody

Mark Carmody has spent many years gardening in Canberra at ACT Parks and Conservation, the National Rose Gardens and as head gardener at The Lodge. Mark will launch the 2012 program by talking about his favourite plants, both native and exotic, that are suitable for Canberra gardens.

Thursday 9 February at 12:30 pm
'Calling in the face of danger: parent/offspring communication under the risk of predation'
Tonya Haff

Recent research using White-browed Scrubwrens as the model has shown that the young are not quite so helpless as previously believed, and that parents show a surprising nuance in their ability to assess and reduce risk to their chicks. Tonya has undertaken this research as a PhD student.



Thornbill on nest.
Photo by Graham Stephenson ©, from COG gallery

Thursday 16 February at 12:30 pm
'Fungal pathogens: threats to Australian bush and gardens, with special reference to guava rust (*Puccinia psidii*)'
Ken Old

Ken Old, who retired from CSIRO Forestry in 2003, will speak about the new threat from *Puccinia psidii*, a pathogen indigenous to South America which attacks leaves, shoots and fruits of Myrtaceae. From north coast of NSW, it has spread to Qld and Ulladulla, and may extend throughout eastern Australia.

Thursday 16 February 6.30pm
Friends 'Twilight Dinner'
Hudsons in the Gardens

See booking form on back page of Fronds

Thursday 23 February at 12:30 pm
'Future of alpine offspring'
Dr Adrienne Nicotra and
Dr Gemma Hoyle

How will climate change affect our vulnerable alpine flora's reproductive biology and demography and would its biodiversity be conserved? Drs Nicotra and Hoyle, from ANU's Research School of Biology, are key members of the team that is doing research on Australian Alpine seed ecology.

Saturday 25 February at 6.30 pm
Flix in the Stix
Eucalypt Lawn

An intimate evening of music and award winning short film under the stars. Tickets on sale from 23 January. More details at: www.flixinthestix.com.au/canberra/buytix.

Saturday 25–Sunday 26 February
Botanical Art Workshop

Introduction to Botanical Art with Nilavan Adams. Presented by the Canberra Institute of Botanical Art. For further information and bookings contact Nilavan Adams on 0422 357441 or email cibaworkshops@hotmail.com

MARCH

Thursday 1 March at 12:30 pm
'Changes in bird occupancy with habitat change in ACT woodlands'

Nicki Taws

Nicki has been involved with the Canberra Ornithologists Group for nearly 20 years, and has assisted with the Woodland Bird Monitoring Project. A recent study explores long-term trends in birds and changes in habitat in woodlands of the ACT.

Thursday 8 March at 12:30 pm
'Desert leaves: when being small and thick keeps you out of trouble'

Dr Andrea Leigh

Andy Leigh will present an overview of how desert plants avoid leaf temperature stress, focusing on leaf morphological adaptations, leaf size and the lesser known role of thickness. Andy is a Canberra girl who studied at ANU, travelled and worked in Africa, and now researches at UTS Sydney.



Thursday 15 March at 12:30 pm
'Sir Joseph Banks, botanical collector and public man of science'
Don Beer

Don Beer, active Friend and Guide, and ex-Professor of History specialising in nineteenth-century Britain and the Empire, will discuss Banks as a person and botanist and present some modern views of his historical importance.

Thursday 22 March at 12:30 pm
'Trees and arboreta: history and science'

Max Bourke AM

Collecting new species, preserving and studying them, admiring and wondering about them all contribute to the inspiration for arboreta. Arboreta have their roots in the early nineteenth century but continue to this day. As well as having a career in large-scale agricultural projects Max is Executive Director of the Thomas Foundation, which principally supports environmental projects.



Thursday 29 March at 12:30 pm
'Landscape architecture – ANBG project design and philosophy'
Kaiya Browning

Kaiya, Resident Landscape Architect at the ANBG, will talk about the influences behind her designs for recent ANBG stands at Floriade and developments at the ANBG, including the Red Centre Garden project.

APRIL

Thursday 5 April at 12:30 pm
'Wildflowers and vegetation of Kamchatka, Far East Russia'
Rosemary Purdie

Plant ecologist Rosemary Purdie recently visited Kamchatka, Russia's land of ice and fire: because of its long, extreme winters, and its many volcanoes that dominate its landscape. These elements contribute to a varied and beautiful floral display over spring and summer. Rosemary will introduce lowland forest, tundra, lava flow and alpine vegetation and plants she saw, and show a colourful relationship between some local plants and brown bears!

Thursday 12 April at 12:30 pm
'Pollen – nothing to sneeze at'
Andrew Thornhill

To most people pollen is a yellow dust that causes hayfever; but look a little closer—pollen comes in a multitude of shapes and sizes. Andrew will present pollen images of Australian plants and describe the many ways that pollen can be used in scientific research.

Thursday 19 April at 12:30 pm
'A short walk in the Pyrenees'
Kim Pullen

Kim is a CSIRO entomologist. With his wife he recently visited the Valle d'Aran in the Pyrenees where they took long walks through alpine meadows and lush forests. Kim will talk about this part of Spain, close to the French border, and share some pictures of the rich alpine flora and stunning scenery.

Thursday 26 April at 12:30 pm
'Glimpses into the world of Australian moths'
Ted Edwards



Ted Edwards, co-author with Paul Zborowski of *A Guide to Australian Moths*, will provide a general introduction to the biology of moths, often thought of as the ugly cousins of butterflies. However, they can be just as remarkable and their biology and lifestyles are often far more diverse.

Friends' Benefits

As a Friend you are entitled to:

Three issues of *Fronde* a year

Free parking pass

Botanical Bookshop – a discount on most items

Hudsons Café – discounts on some items

You also get:

Advance details of lectures

Advance bookings for some events

Discounts on some events

ANBG library membership – borrow books, serials, videos, DVDs plus use of computers and interactive CD ROMs

Function facilities – special rates for functions at ANBG

And opportunities to:

Join Botanical Art Groups, Growing Friends and Photographic Group

Assist with Gardens research projects

Become a Guide or an Explainer

Relax in the Friends Lounge – in the Ellis Rowan Building, open to members 9.30 am to 4.30 pm. Relax with tea/coffee and lots of interesting reading.

The Botanical Bookshop

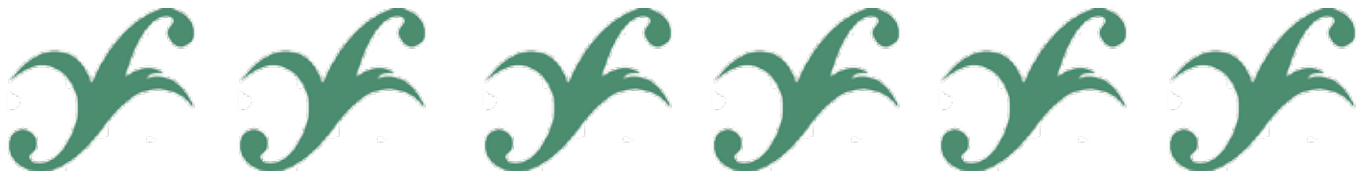
www.botanicalbookshop.com.au

always welcomes Friends!

A 10% discount is offered:

- on purchases over \$10
- on production of your membership card
- to the person whose name is on this card

No discount given for 'Red Spot Specials'.



Friends of the Australian National Botanic Gardens

'TWILIGHT DINNER'

This popular annual event is especially for Friends of the Gardens, providing the chance to catch up with other members of the Friends in a wonderful venue.

The Dinner this year will vary slightly from the norm, as we will be including an opportunity for guests to experience the Gardens in the dark! After our guest speaker has shared with us some of the secrets of the Gardens' Twilight Walks, we will be taken on a short guided tour to experience the newly installed mood lighting (funded by the Friends) in the rainforest gully. Please wear suitable footwear for a short walk down into the rainforest.

And yes, we will also have the traditional lucky door prizes!!

WHEN: THURSDAY 16 FEBRUARY 2012 commencing at 6.30pm for drinks and canapés at Hudsons Café Terrace.

COST: \$60 per person (includes pre-dinner drink, canapés, main course, dessert and tea/coffee). Additional wine, beer and soft drinks may be purchased from Hudsons. NO BYO.
(Members of the Friends may invite one guest)

ENQUIRIES & PHONE BOOKINGS: Jan Finley 6255 8441 or Barbara Podger 6247 7188

Prepaid bookings must be received by **Monday 13 February 2012**

Phone bookings (pay by credit card) may be made to Jan or Barbara on the above phone numbers

Mail bookings to: Twilight Dinner, Friends of ANBG, GPO Box 1777, Canberra ACT 2601

Or drop in the Friends mail box in the Visitor Centre at the Gardens.

Refund policy: refunds may be given at the discretion of the organisers if bookings cancelled at least one week prior to the event.

Your tickets will be mailed out. Please include a stamped, self-addressed envelope

BOOKING FORM (Please book early as we have reduced the number of seats this year.)

Name: _____ Phone: _____

Email address: _____

Mailing address: _____ P/C _____

Number of tickets @ \$60 _____ Amount due: _____

Cheque enclosed (Made to: Friends of the ANBG) OR Charge to Mastercard Visa

Card No. _____ Expiry Date: ____ / ____

Name on card: _____ Signature: _____

PLEASE PRINT

Any dietary requirements? _____

Your tickets will be mailed out. **Please include** a stamped, self-addressed envelope